

DURABOOK, Built Tough, Built to Last

-A notebook tough enough to survive under real world conditions



Drop resistant

- Magnesium alloy case
- Optical drive lock design



Spill resistant

- Spill resistant keyboard, touchpad and buttons



Shock resistant

- Anti-shock mounted HDD
- Anti-shock mounted LCD screen



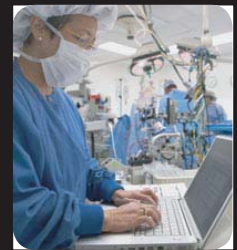
Protection

- DuraDrive Protects Data



Battery

- Hot swappable battery



DURABOOK D15RP

Rugged Outside:

- Passed Simulated Drop/Shock/Spill test in accordance to Military Standard 810F

Security Feature:

- One Smart Card socket for identity protection & TPM 1.2 support

Performance Inside:

- Intel® Centrino® Duo Mobile Technology
 - Intel® Santa Rosa Refresh, 45mm Penryn Ready
 - Intel® Core™2 Duo processor (4MB L2 Cache, 800/667MHz FSB)
 - Intel® Mini Express Card Wireless LAN 802.11N
- Genuine Windows Vista® Business Edition
- 15.4-inch WXGA/WXGA + Resolution 1280 x 800 / 1440x900 (option)
- LCD with Anti-glare coating acrylic protection
- Integrated 4 in 1 media Card Reader & one Express Card Type 54/34 slot
- Hot Swappable Battery
- 1.3 Mega-pixel Webcam
- Intel® Media Accelerator GMA X3100 Graphics Core
- 3G Antenna



D15RP

GammaTech recommends Windows Vista® Business

DURABOOK Tough Features

| | |
|--------------------|--|
| Drop Resistant | Magnesium alloy case - 20 times stronger than ABS plastic, offering higher survival rate after drops and bumps. 26 drops from 76 cm height to plywood over concrete with unit off and display closed. 5 units to pass. Simulate MIL STD 810F, Method 516.4, Procedure IV. |
| Shock Resistant | Anti-shock mounting design protects LCD screen and hard disk drive from damage and data loss. Flexible HDD cable design absorbs shock from drops. Simulate MIL STD 810F, Method 514.5, Procedure I, Category 10, Fig 16 & 17/ASTM4169, Truck Transport, 11.5.2 Random test, Assurance Level II |
| Spill Resistant | Spill resistant keyboard, touchpad and switches Spill resistant design stops spills from leaking into sensitive interior parts. |
| Optical Disk Lock | Exclusive optical disk tray lock prevents unintentional tray eject from drop and vibration. |
| Battery Protection | Double protection smart battery circuitry prevents damage caused by current or voltage surges and overheating. Smart Battery Calibration helps fight the loss of battery capacity after repeated charge-discharge cycles. |

System Specifications

| | |
|-------------------------|---|
| Processor | Intel® Centrino® Duo Mobile Technology Intel® Core™ 2 Duo processor (FSB 800/667MHz) 4MB L2 Cache Intel® Santa Rosa Refresh, 45nm Penryn ready |
| Chipset | North Bridge: Intel® GM965 South Bridge: Intel® ICH8M |
| System Memory | Two Dual Channel DDR II SODIMM Slots each for 1GB/2GB (Max. 4GB) *Max. 3GB under Windows XP & Vista 32-bit OS |
| Hard Disk Drive | 160GB / 250GB Encryption High Security HDD, SATA 150 (option) Anti Shock Mounted HDD (Protection From Vibration In Transporting) |
| Optical Media Device | One internal optical drive for: <ul style="list-style-type: none">• Combo Drive (DVD/CD-RW)• DVD Dual or DVD Super Multi (DVD-R/CD-RW/DVD-RW/DVD+RW_DL/DVD-RAM) |
| Display | 15.4" WXGA/WXGA+ resolution 1280 x 800/1440 x 900(option) with DuraScreen design Anti-glare coating acrylic protection sheet |
| Webcam | 1.3Mega-pixel Webcam |
| Graphics & Video | Intel® Graphics Media Accelerator X3100 (Mobile Intel GMA X3100) <ul style="list-style-type: none">• Intel® enhancement AGP BUS equivalent hardware 2D/3D video graphic accelerators• Shared system memory up to 358MB Max. (Intel Driver Dynamic Change) |
| Audio | Compliant to Intel® High Definition Audio (Azalia) <ul style="list-style-type: none">• Stereo: two 1.5W speakers• Built-in Microphone |
| I/O Devices | <ul style="list-style-type: none">• One Smart Card socket• 4 in 1 media card reader support MS/MS Pro/SD/MMC <ul style="list-style-type: none">• 2 button PS/2 Touchpad |
| I/O Ports | <ul style="list-style-type: none">• Three USB 2.0 connectors• One IEEE 1394 port• One 9 pin D-sub connector for RS232 serial port• One Type II Express Card 34/54• One 15 pins D-Sub connector for external monitor <ul style="list-style-type: none">• One Line-Out phone jack for external speakers• One Mic-In phone jack for external microphone• One RJ-11 jack for internal 56Kbps V.90 modem• One RJ-45 jack for internal 10/ 100/ 1000Mbps Ethernet• One DC-In jack |
| Keyboard | Spill resistant Keyboard (88 Keys with Windows Key) Function Keys: <ul style="list-style-type: none">• Fn+F1: Bluetooth off/on• Fn+F2: 3G off/on• Fn+F3: Touchpad off/on• Fn+F4: Suspend mode• Fn+F5: Display Switch (LCD -> CRT -> LCD+CRT)• Fn+F6: Brightness Decrease• Fn+F7: Brightness Increase• Fn+F8: Volume Control Down• Fn+F9: Volume Control Up• Fn+F10: Mute |
| Wireless/Communications | Modem: Internal 56K V.92 Fax/Modem Ethernet: Integrated 10/100/1000 Mbps Ethernet Wireless: Intel® Pro/Wireless 3945ABG (802.11 a/ b/ g) network connection Wireless: Intel® Mini Express Wireless LAN 802.11n(Option) WWAN: Internal 3G module with Mini Express solution (w/o Voice) Bluetooth: Built-in Bluetooth 2.0 + EDR |
| AC Adapter | Input: AC 90~265V 47/63Hz, Output: 19V/4.74A/65W |
| TPM | Standard Internal TPM 1.2 Data Security Protection |
| Battery | Standard: 9 cell 6600mAh Li-Ion battery (Approx. 4hrs) Hot Swappable Battery design |
| Dimensions & Weight | 370mm(W) x 276mm(D) x 37.5~40mm(H) / 14.6"(W) x 10.9"(D)x 1.48"~1.58"(H) 3.2Kg/7.1lbs (with 9 cell battery) |
| Certification | FCC, DOC, CUL CE, CB |
| Security | Kensington Lock / Administrator password / Boot password |



GAMMATECH COMPUTER CORPORATION

Tel: 1-510-492-0828

Email: sales@gammatechusa.com

http://www.gammatechusa.com

- The specification and pictures are subject to change without notice.
- All brand names are registered trademarks of their respective owners.